

THOROUGHBRED

STATIONARY AND PORTABLE CONCRETE PLANTS

Stephens

CONCRETE PLANTS • Tompkinsville, KY

800-626-0200

www.stephensmfg.com



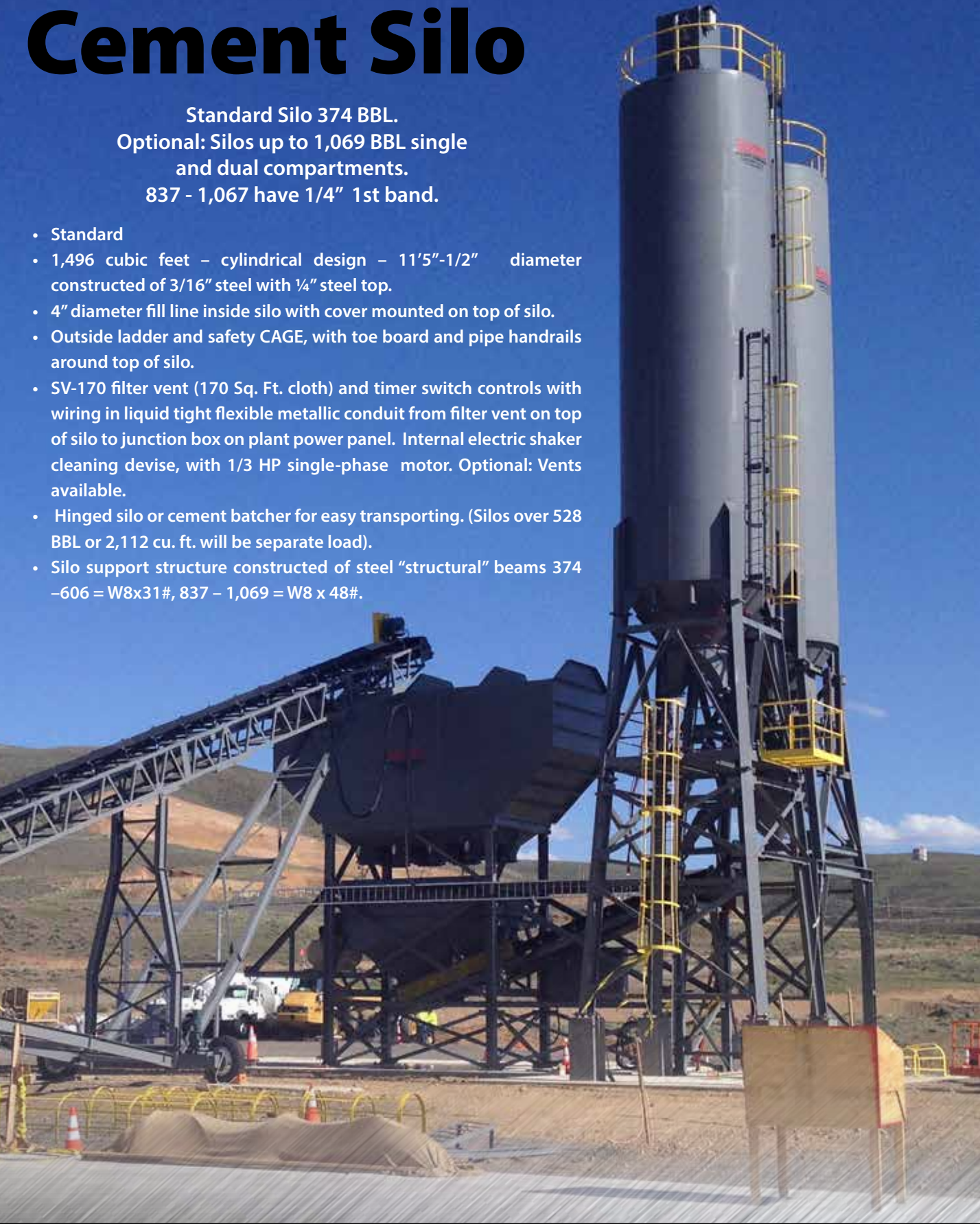
Thoroughbred



Cement Silo

Standard Silo 374 BBL.
Optional: Silos up to 1,069 BBL single
and dual compartments.
837 - 1,067 have 1/4" 1st band.

- Standard
- 1,496 cubic feet – cylindrical design – 11'5"-1/2" diameter constructed of 3/16" steel with 1/4" steel top.
- 4" diameter fill line inside silo with cover mounted on top of silo.
- Outside ladder and safety CAGE, with toe board and pipe handrails around top of silo.
- SV-170 filter vent (170 Sq. Ft. cloth) and timer switch controls with wiring in liquid tight flexible metallic conduit from filter vent on top of silo to junction box on plant power panel. Internal electric shaker cleaning devise, with 1/3 HP single-phase motor. Optional: Vents available.
- Hinged silo or cement batcher for easy transporting. (Silos over 528 BBL or 2,112 cu. ft. will be separate load).
- Silo support structure constructed of steel "structural" beams 374 –606 = W8x31#, 837 – 1,069 = W8 x 48#.



Thoroughbred Portable Concrete Plant

The Stephens Thoroughbred comes with bolt on extension legs with 13' 6" clearance to metal.

Stephens Mfg. is a member of the CPMB (Concrete Plant Manufacturers Bureau) Each plant will have a CPMB rating plate to guarantee that it meets the specifications for that size plant.



Cement Batcher



- 14 yd cement batcher 140 cu. ft. with 10,000 lb. lever system, one "s" type load cell (100' cable) with 0-10 VDC digital readout, with inching gate on batcher inspection hatch on top of batcher.
- Hanger lugs for hanging test weights and safety chains to secure batcher. Optional: Limit Switches available.

Aggregate Bin

Standard 70 TON - Three Compartments.
(Optional: Bins up to 200 Ton- Six Compartments).

1400 cubic feet 70 ton – 51 cubic yards with heap – 3
compartment overhead storage bins.

- Bolt on extension legs between overhead bins and aggregate batcher.
- 10 yards of material may be discharged from any two (2) compartments. (On 4-compartment bin consult factory).
- Hinged fold down sides for easy transportation. (Note: It may be to customer's advantage to have bins welded up to save crane time and labor in the field.)
- Two clam gates on each compartment. Gear type gates with six (6) $\frac{3}{4}$ " teeth on each gear.
- Each gate has permanently lubricated bronze bushings.
- 5" diameter air cylinder with electric solenoid.
- Heap plates.
- $\frac{1}{4}$ " abrasive resistant steel (400 brinnell) welded immediately above each gate (approx 12" tall.)

Optional: A/R Liners available

Aggregate Batcher

- 12 yard with 40,000 lbs lever system with one "s" type load cell and 0-10 VDC digital readout.
- 580 Cu. Ft. capacity at water level.
- Two discharge openings in batcher with one (1) extra long double acting clamshell gates, under both openings. Gear type gate with six (6) $\frac{3}{4}$ " teeth per gate. Gate has permanently lubricated bronze bushing. Gate will be actuated by two 5" air cylinders, with flo-restrictors mounted in solenoid.

Transfer Conveyor



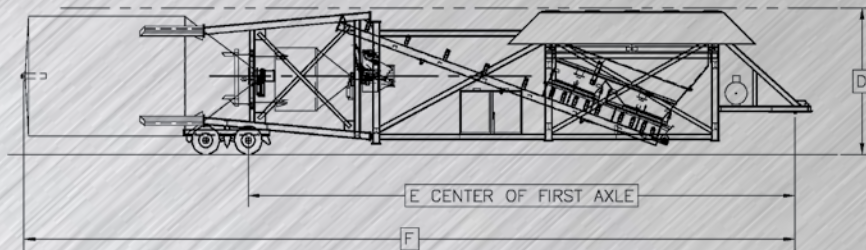
- 30" x 33'6" channel frame transfer conveyor.
- 15-HP 3-phase TEFC motor 230/460 volts.
- Stephens conveyors are rated by the CPMB (Concrete Plant Manufacturers Bureau) for accurate discharge rates.
- Optional: 36 Transfer Conveyor available



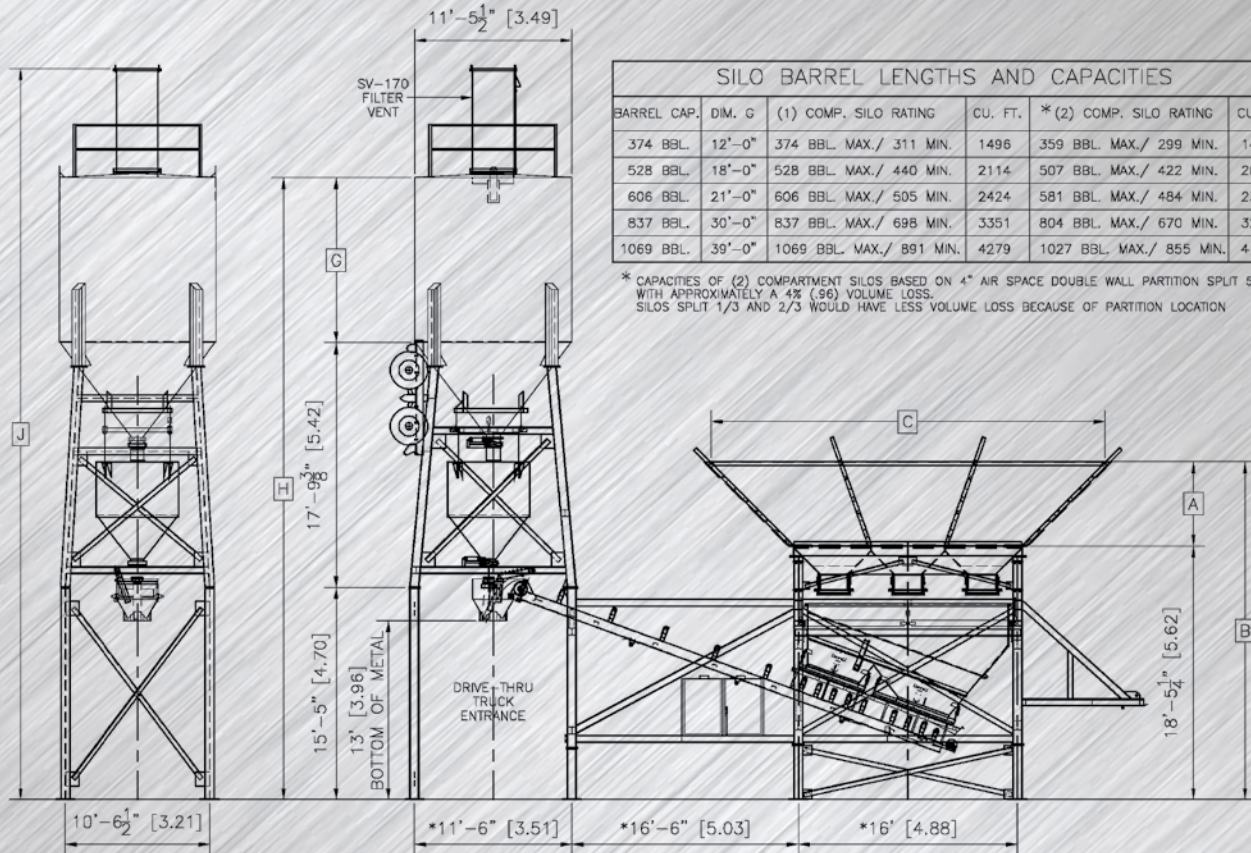
AIR COMPRESSOR
Standard: 15 HP 240 Gallon
Optional: 20 HP and Rotary Compressors



ELECTRICAL PANEL
200 AMP Power Panel
Optional: 400 and 600 AMP



THOROUGHbred - TOWING POSITION



SILO BARREL LENGTHS AND CAPACITIES

BARREL CAP.	DIM. G	(1) COMP. SILO RATING	CU. FT.	* (2) COMP. SILO RATING	CU. FT.
374 BBL.	12'-0"	374 BBL. MAX./ 311 MIN.	1496	359 BBL. MAX./ 299 MIN.	1436
528 BBL.	18'-0"	528 BBL. MAX./ 440 MIN.	2114	507 BBL. MAX./ 422 MIN.	2029
606 BBL.	21'-0"	606 BBL. MAX./ 505 MIN.	2424	581 BBL. MAX./ 484 MIN.	2327
837 BBL.	30'-0"	837 BBL. MAX./ 698 MIN.	3351	804 BBL. MAX./ 670 MIN.	3217
1069 BBL.	39'-0"	1069 BBL. MAX./ 891 MIN.	4279	1027 BBL. MAX./ 855 MIN.	4108

* CAPACITIES OF (2) COMPARTMENT SILOS BASED ON 4" AIR SPACE DOUBLE WALL PARTITION SPLIT 50/50 WITH APPROXIMATELY A 4% (.96) VOLUME LOSS.
SILOS SPLIT 1/3 AND 2/3 WOULD HAVE LESS VOLUME LOSS BECAUSE OF PARTITION LOCATION

70 TON - 200 TON

THOROUGHbred PORTABLE CONCRETE PLANT DIMENSIONS CHART

DESCRIPTION	UNITS	A	B	C	D	E	F	G	H	J	CAPACITIES CU. YARDS CU. METERS
70 TON AGG. BIN	STD.	3'-1 1/2"	21'-6 3/4"	22'-8 3/4"	14'-0"	---	---	---	---	---	51.85
	METRIC	.95 M	6.57 M	6.93 M	4.27 M	---	---	---	---	---	39.6
100 TON AGG. BIN	STD.	5'-1 1/2"	23'-6 3/4"	26'-8 3/4"	14'-0"	---	---	---	---	---	74.07
	METRIC	1.56 M	7.18 M	8.15 M	4.27 M	---	---	---	---	---	56.0
120 TON AGG. BIN	STD.	6'-1 1/2"	24'-6 3/4"	28'-8 3/4"	14'-0"	---	---	---	---	---	88.8
	METRIC	1.85 M	7.49 M	8.76 M	4.27 M	---	---	---	---	---	67.8
150 TON AGG. BIN	STD.	8'-2"	26'-7 1/4"	28'-0"	14'-0"	---	---	---	---	---	111.11
	METRIC	2.49 M	8.11 M	8.53 M	4.27 M	---	---	---	---	---	84.9
200 TON AGG. BIN	STD.	11'-4"	29'-9 1/4"	28'-0"	14'-0"	---	---	---	---	---	148.1
	METRIC	3.45 M	9.07 M	8.53 M	4.27 M	---	---	---	---	---	113.2
374 BARREL CEM. SILO	STD.	---	---	---	---	52'-5 3/8"	73'-11 3/8"	12'-0"	45'-2 3/8"	53'-1 3/4"	55.4
	METRIC	---	---	---	---	15.99 M	22.54 M	3.66 M	13.78 M	16.2 M	42.3
528 BARREL CEM. SILO	STD.	---	---	---	---	52'-5 3/8"	76'-11 3/8"	18'-0"	51'-2 3/8"	59'-1 3/4"	78.2
	METRIC	---	---	---	---	15.99 M	23.45 M	5.49 M	15.61 M	18.03 M	59.7
606 BARREL CEM. SILO	STD.	---	---	---	---	SEE NOTE A	SEE NOTE A	21'-0"	54'-2 3/8"	62'-1 3/4"	89.7
	METRIC	---	---	---	---	---	---	6.40 M	16.52 M	18.94 M	68.5
837 BARREL CEM. SILO	STD.	---	---	---	---	SEE NOTE A	SEE NOTE A	30'-0"	63'-2 3/8"	71'-1 3/4"	124.0
	METRIC	---	---	---	---	---	---	9.14 M	19.26 M	21.69 M	94.8
1069 BARREL CEM. SILO	STD.	---	---	---	---	SEE NOTE A	SEE NOTE A	39'-0"	72'-2 3/8"	80'-1 3/4"	158.3
	METRIC	---	---	---	---	---	---	11.89 M	22.01 M	24.43 M	121.0

NOTE A: MAY REQUIRE SPECIAL TWO PIECE DESIGN - PLEASE CONSULT FACTORY.

NOTE: TO CONTINUALLY UPDATE AND IMPROVE OUR PRODUCT WE RESERVE THE RIGHT TO AMMEND OUR STANDARD SPECIFICATIONS WITHOUT NOTICE.



Why a Stephens?

- Owned by Stephens family since 1957
- Reputation of honest, reliable and second to none sales and service
- In-house CNC/Machine shop
- Certified in-house scales to keep load cell size and quantity down
- Simple and easy to service and maintain, features standard off the shelf parts
- Each plant is designed for your seismic requirements

Proud
Members of



Stephens

www.stephensmfg.com

Find us on:



Stephens

CONCRETE PLANTS • Tompkinsville, KY

Stephens Manufacturing

P.O. BOX 488 • TOMPKINSVILLE, KY 42167

PHONE: 800-626-0200 • OUTSIDE the USA 270-487-6774

FAX: 270-487-8368

www.stephensmfg.com



Local Distributor: