

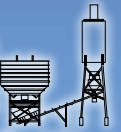
Stephens



PONY EXPRESS



Stephens

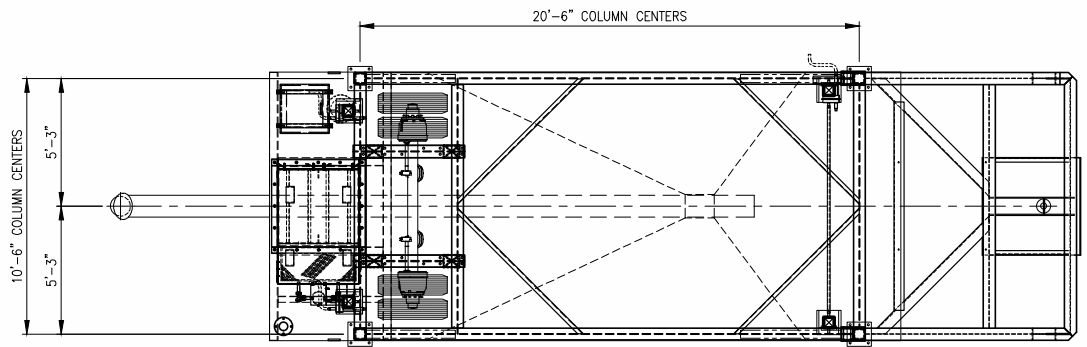


CONCRETE PLANTS • Tompkinsville, KY

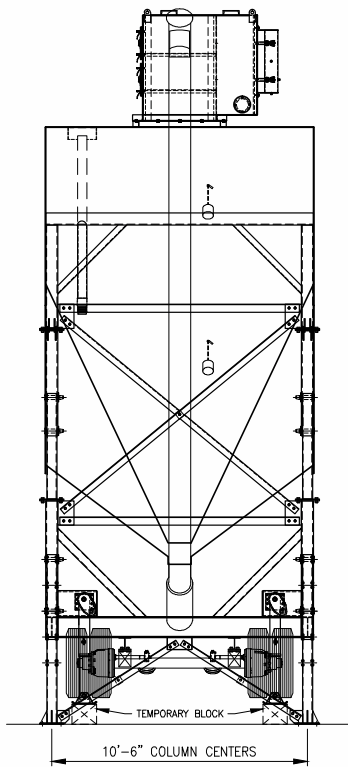
800-626-0200

www.stephensmfg.com

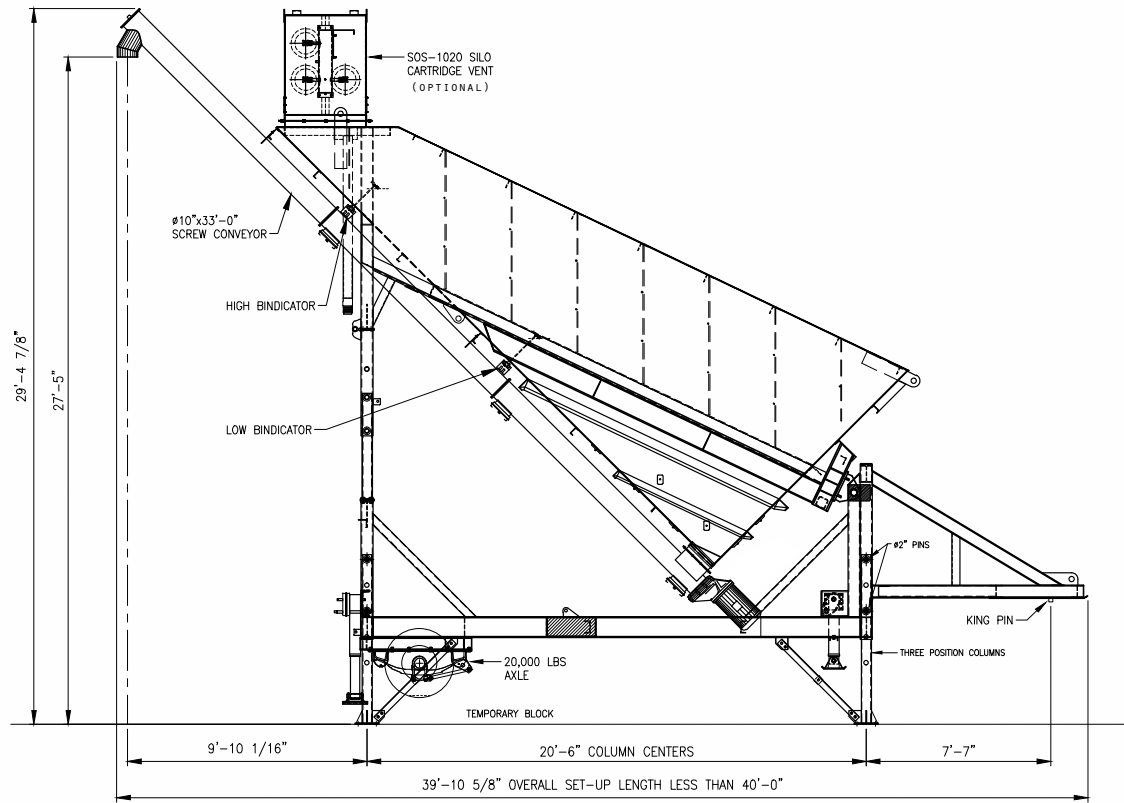
OPTIONAL SKID BASED MODEL



PLAN VIEW: PONY EXPRESS MOBILE SILO



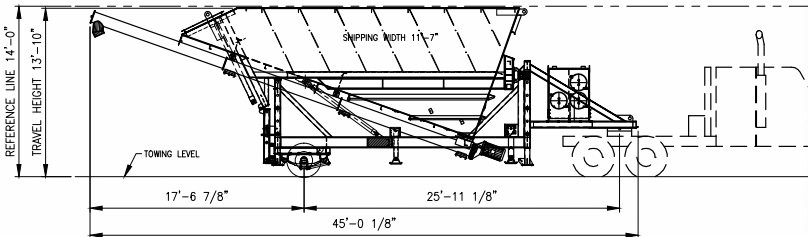
LEFT SIDE VIEW



SIDE VIEW: PONY EXPRESS MOBILE SILO

NO.	DATE	REVISION	CONFIDENTIAL
			THIS DRAWING IS THE PROPERTY OF STEPHEN A. CONFIDENTIAL. IT IS NOT TO BE REPRODUCED, COPIED, OR TRANSMITTED IN ANY FORM OR BY ANY MEANS, ELECTRONIC OR MECHANICAL, WITHOUT THE WRITTEN PERMISSION OF THE EXAMINER.

STANDARD PONY EXPRESS

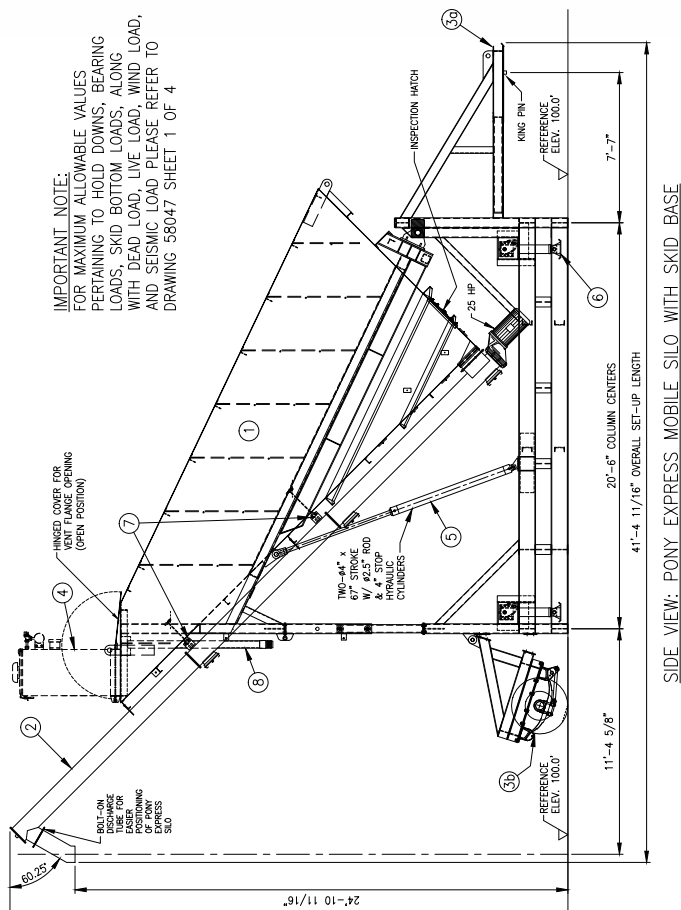


PONY EXPRESS MOBILE SILO – TOWING ARRANGEMENT

IMPORTANT TRANSPORTATION NOTES:
BIN MUST BE EMPTY WHEN TOWING
BIN MUST BE EMPTY WHEN RAISING & LOWERING INTO POSITIONS
SECURE ALL ITEMS AND CHECK BEFORE MOVING EQUIPMENT

OPTIONAL SKID MOUNTED PONY EXPRESS

IMPORTANT NOTE:
FOR MAXIMUM ALLOWABLE VALUES
PERTAINING TO HOLD DOWNS, BEARING
LOADS, SKID BOTTOM LOADS, ALONG
WITH DEAD LOAD, LIVE LOAD, WIND LOAD,
AND SEISMIC LOAD PLEASE REFER TO
DRAWING 58047 SHEET 1 OF 4



SIDE VIEW: PONY EXPRESS MOBILE SILO WITH SKID BASE

STANDARD EQUIPMENT

- 412 BBL – 1648 CUBIC FEET
- 4" DIAMETER FILL LINE
- SV-265 SILO FILTER VENT (BAG VENT)
- HI AND LOW LEVEL INDICATORS IN SILO
- FOUR MECHANICAL LEVELING JACKS
- SINGLE AXLE TRANSPORTATION SYSTEM
- 10" x 33' SPLINE DRIVE SCREW CONVEYOR

OPTIONAL

- LARGER SCREW CONVEYOR 12"
- LARGER SILO DUST COLLECTORS (SOS-1020 CARTRIDGE VENT)
- LOW PRESSURE AERATION BLOWER (STRONGLY RECOMMENDED)
- GAS & ELECTRIC HYDRAULIC PACKAGES FOR SELF ERECTING
- OPTIONAL SKID BASED FRAME

<small> IDENTIFICATION DISCLOSURE THIS IS THE EXCLUSIVE PROPERTY OF STEPHENS MANUFACTURING CO., INC. THE CONTENTS OF THIS DRAWING ARE NOT TO BE REPRODUCED OR COPIED IN ANY MANNER WITHOUT WRITTEN CONSENT. </small>	DRAWN BY: GWB DATE: 02-06-2014 SCALE: NONE	Stephens TOMPKINSVILLE, KY. 42187	FOR: STEPHENS 2014 STOCK PONY #3 TOMPKINSVILLE, KY TITLE: PONY EXPRESS MOBILE SILO ELEVATIONS AND PLAN VIEW	JOB NO. 321-00001 SHEET NO. 1 OF 1	REV. NO. 1
--	--	---	--	---	------------------

STANDARD NON-SKID BASED MODEL



Stephens

www.stephensmfg.com

Find us on:



Stephens

CONCRETE PLANTS • Tompkinsville, KY

Stephens Manufacturing

P.O. BOX 488 • TOMPKINSVILLE, KY 42167

PHONE: 800-626-0200 • OUTSIDE the USA 270-487-6774

FAX: 270-487-8368

www.stephensmfg.com



Why a Stephens?

- Owned by Stephens family since 1957
- Reputation of honest, reliable and second to none sales and service
- In-house CNC/Machine shop
- Certified in-house scales to keep load cell size and quantity down
- Simple and easy to service and maintain, features standard off the shelf parts
- Each plant is designed for your seismic requirements

Proud
Members of



Local Distributor: