



**Stephens**

CONCRETE PLANTS • Tompkinsville, KY

**800-626-0200**

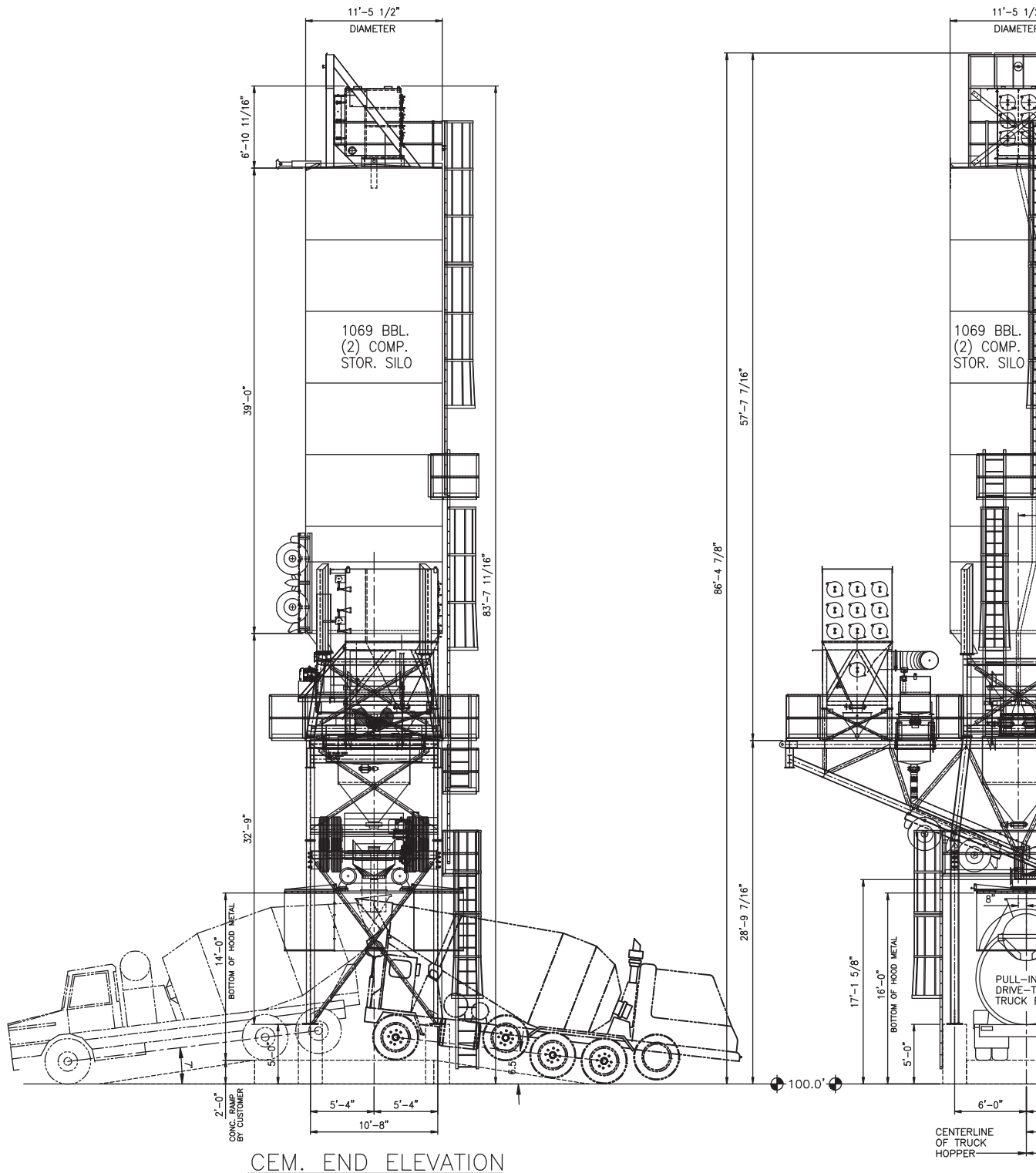
[www.stephensmfg.com](http://www.stephensmfg.com)

# FALCON

## STATIONARY & PORTABLE CONCRETE PLANTS





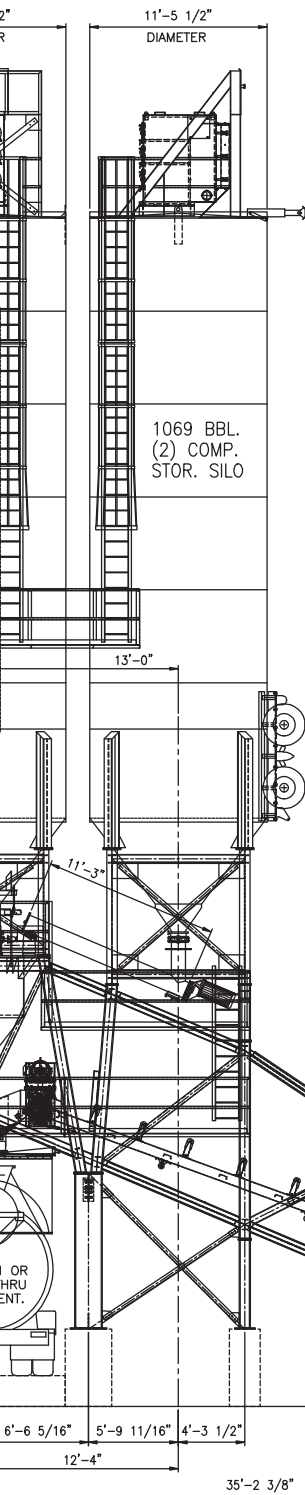


PRELIMINARY DRAWING - NOT FOR CONSTRUCTION - SUBJECT TO CHANGE

FALCON CONCRETE

-	-	-	-	-	-	-	-	-	-
-	-	-	-	-	-	-	-	-	-
DRAWING NO.	REFERENCE	-	-	-	-	NO.	DATE	-	-

# ned for Seismic Zone 1

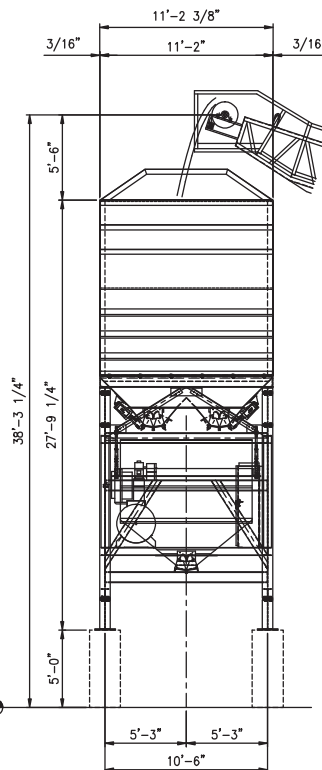
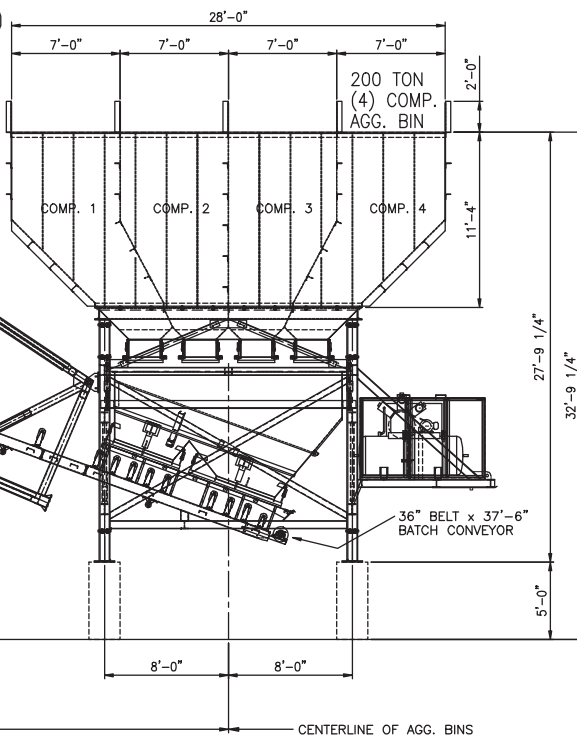


## Supports:

- Two 1069 BBL Silos
- 200 Tons of Aggregate Bin
- SOS - Central Dust Collector

## Optional Equipment Can Include:

- 36" Super Fast Transfer Belt
- Water Batcher & Holding Tank
- Seismic Zone 4 Engineering & Construction
- 400 Tons of Aggregate Bin



BATCH PLANT SIDE ELEVATION — OPERATING POSITION

AGG. END ELEVATION

REVISION	CONFIDENTIAL DISCLOSURE THIS DRAWING IS THE EXCLUSIVE PROPERTY OF STEPHENS MANUFACTURING CO., INC. THE RECIPIENT ACKNOWLEDGES THAT ITS CONTENTS ARE CONFIDENTIAL AND MAY NOT BE COPIED OR SUBMITTED TO OUTSIDE PARTIES FOR USE OR EXAMINATION WITHOUT WRITTEN CONSENT.	DRAWN BY: RTK	<b>Stephens</b> TOMPKINSVILLE, KY. 42187	FOR: —	JOB NO. F36-200-1069	REV. NO. 0
		DATE: 09-15-08		TITLE: FALCON — 36" BELT BAT CONV, 200 TON AGG BIN, TWIN 1069 BBL. (2) COMP. SILO'S	SHEET NO. 1	



# Why a Stephens?

- Owned by Stephens family since 1957
- Reputation of honest, reliable and second to none sales and service
- In-house CNC/Machine shop
- Certified in-house scales to keep load cell size and quantity down
- Simple and easy to service and maintain, features standard off the shelf parts
- Each plant is designed for your seismic requirements

## Proud Members of



**Stephens**  
www.stephensmfg.com

Find us on:



**Stephens** 

CONCRETE PLANTS • Tompkinsville, KY

*Stephens Manufacturing*

P.O. BOX 488 • TOMPKINSVILLE, KY 42167

PHONE: 800-626-0200 • OUTSIDE the USA 270-487-6774

FAX: 270-487-8368

[www.stephensmfg.com](http://www.stephensmfg.com)



**Local Distributor:**